

Personal Response System (PRS)

The personal response system is an interactive learning tool that has the ability to improve the educational experience and increase learning retention if used correctly. It can be used to:

- Present patient cases
- Reinforce key take-home points
- Poll the knowledge level of conference attendees

Learners use transmitters to submit their answers anonymously to a PRS question in a PowerPoint slide presentation and then view a graph of their responses at the bottom of the PowerPoint slide.

PRS Questions and Answers

- Submit to the SMDC CME Office **one week prior to the conference.**
- Questions may be either true-false or multiple-choice.
- Keep the learning objectives for your presentation in mind while formulating questions.
- Submit both the correct and incorrect answers, and identify the correct answer.
- Be sure to emphasize the correct answers to your questions during your lecture.
- Follow the format of the sample questions below:

Q1. The current best serologic testing for celiac disease is:

1. Antigliadin antibody.
2. IgA antiendomysial antibody and serum IgA.
3. IgA anti-tissue transglutaminase antibody and serum IgA. **(correct)**
4. HLA haplotype (HLA DQ8 and D2).

Q2. Failure to follow a gluten-free diet puts the celiac patient at higher risk for developing:

1. Other autoimmune diseases.
2. Cancer.
3. Vitamin and mineral deficiencies.
4. All of the above. **(correct)**

Q3. Negative RAST test rules out milk allergy in infants.

1. True
2. False **(correct)**

PRS PowerPoint Slides

- You may create the PRS PowerPoint slides yourself or request the SMDC CME Office create them.

- If you choose to create the slides yourself:
 - You may place them in your slide presentation at any point you wish.
 - Each question with its possible answers should be a separate PowerPoint slide.
 - If you choose this option, you still need to submit your questions and answers to the CME Office one week in advance of your lecture in order to have them programmed into the PRS software.
- If you choose to have the CME Office create the slides:
 - Indicate this when you submit your questions and answers.
 - Specify where you want the questions inserted in your final presentation file, e.g., all questions at the end of the presentation, Q1 after slide #32, etc.

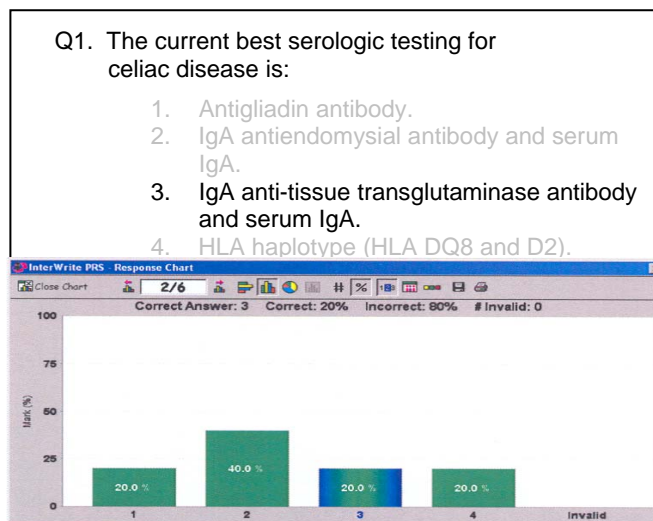
PRS PowerPoint Slide Format

Example of slide for multiple choice question:

Q1. The current best serologic testing for celiac disease is:

1. Antigliadin antibody.
2. IgA antiendomysial antibody and serum IgA.
3. IgA anti-tissue transglutaminase antibody and serum IgA.
4. HLA haplotype (HLA DQ8 and D2).

- Once the audience responds, the correct answer will appear along with a graph of the audience responses. Remember to emphasize the correct answer once the graph is projected.



Example of how to incorporate a PRS question into a case presentation:

SLIDE 1

CASE 1

- A 72-year-old woman presents for a routine exam.
- She is in generally good health. She takes aspirin 81 mg daily and occasionally needs a stool softener.
- She reports feeling overwhelmed and mildly depressed from caring for her 84 yo husband, who has mid-stage AD. Over the past few months, he has needed more reminders for ADLs, cannot be left alone, and has grown more frail. He sees a specialist in AD every few months.
- The patient reports that at times she feels angry toward her husband and is sleeping less well.

SLIDE 2

CASE 1

Q4. Which of the following interventions is most likely to help this patient?

1. Refer for a support group through the Alzheimer's Association
2. Begin a selective serotonin-reuptake inhibitor
3. Refer for psychotherapy
4. Refer her husband to an adult Center twice weekly
5. Provide a one-time counseling session in the office on how to care for her husband